



ADAPURA
WAGRAIN
★★★★

ski slope

to the cable car
(approx. 100 steps)

to the village
(approx. 100 m)



100 % ALPINE LIVING

Perfect location - right by the cable car station and only about 100 m away from the village centre



4 RESTAURANTS

„PURA ALM“, „PIAZZA“,
„PLACE TO MEAT“ &
„ADASIA“



1,000 m² SPA & RELAX

Large wellness and spa area
for perfect relaxation



UNDERGROUND PARKING

1 guaranteed free underground parking per room



#SAYHELLO

OPENING
8th December 2019



www.adapura-wagrain.com



Alps & Passion in the SalzburgerLand

New. Chic. Casual. The new 4* Hotel ADAPURA in Wagrain will fascinate you with its urbane concept evoking a chic alpine style. Our rooms are furnished with great attention to detail, creating a casual ambience for you to relax. Here at Hotel ADAPURA, you'll experience a new art of living: live at one with the mountains of the Salzburger Land, enjoy breathtaking views of the Alps and feel pure naturalness in our SPA. You won't think about your everyday life for a minute. Alps & Passion with soothing revitalisation.

Coming Soon. We look forward to seeing you on 8th December 2019 when we launch our New Art of Stay concept, or to welcome you as our guest soon thereafter. With this concept, we aim to create a casual holiday atmosphere where you can leave your tie or little black dress in your suitcase, if you so choose. We are stylish, fresh and different. That's our philosophy.

Meet ADAPURA & enjoy!

#hoteladapura #alpsandpassion
#bedifferent #staydifferent
#enjoypureness #alpenlifestyle #casualandchic
#lovethealps #wagrain #skiamade



#FEEL
the extraordinary



#WELCOME

we are looking
forward to
meeting you



Location

- ❖ Directly at the slope, only approx. 100 steps to the „Grafenberg“ cable car with direct access to Snow Space (120 km of slope) and Ski Amadé (760 km of slope)
- ❖ Approx. 100 m to the centre of Wagrain

Facilities

- ❖ Spacious entrance hall with reception, lobby bar, open fireplace and numerous seating accommodations
- ❖ One guaranteed free underground parking per room (*included from 2 p.m. on your arrival day until 10 a.m. on your departure day*)
- ❖ Large ski storage - each room is assigned its own modern, heated and lockable ski cabinet
- ❖ Wine bar with selected national and international wines
- ❖ Cosy bar with open fireplace „The Living Room“
- ❖ 120 rooms & suites with stylish and comfortable furnishings to your liking
- ❖ WLAN access throughout the hotel



#GOOD

*Good times.
Good food.
Good people.*



#RELAX

and enjoy



„Fresh & Delicious“

- Enjoy our 4 themed restaurants
 - Dinner free to choice every night in one of the 4 restaurants, included within the range of your personal board selection.

You're spoilt for choice:

- Austrian cuisine at „PURA ALM“
- Italian delights at „PIAZZA“
- Asian culinary art at „ADASIA“
- BBQ at „PLACE TO MEAT“

Breakfast will be served in all 4 restaurants. In one of the restaurants we will offer an exclusive „Adults Only“ breakfast area (admission from 15 years).



#PLACE2BE

feel the
difference

„Chill & Relax“

- Wellness & SPA area on approx. 1,000 m²
 - With indoor swimming pool (approx. 100 m² of water surface)
 - Finnish old wood sauna approx. 90°C
 - Bio sauna approx. 60°C
 - Aroma steam bath
 - 1 infrared cabin
 - Family textile sauna in the outdoor area
 - 2 relaxation rooms with terraces
 - 3 beauty rooms with various offers
 - Heated outdoor pool (only open in summer) with large garden terrace for relaxation



#NEWHOTEL

enjoy the
new spirit



Hits 4 Kids

- Great facilities for children and teenagers
 - Modern equipped children's playroom
 - Children's cinema
 - Youth club space



PURA

PURA *Alm*

SKISCHULE SHOP RENT FASHION

 SPORT-CENTER
RUDI HUBER





ADAPURA WAGRAIN ****



CASUAL

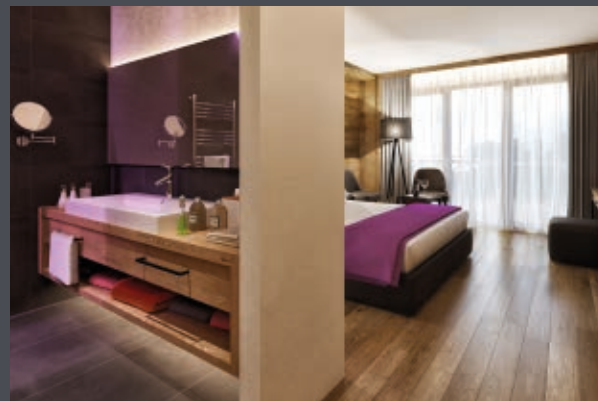
Double room (approx. 25 m²)

- Box-Spring bed (1.80 x 2.00 m)
- Relax chair with footstool
- Large flat screen TV
- USB charging socket
- Telephone
- Roomsafe
- Mini fridge
- WLAN
- Nespresso coffee machine & original capsules
- Kettle and tea bar
- Bathroom with one large washbasin
- Separate toilet
- Rain shower
- Make-up mirror and hairdryer
- Body care products in the bathroom
- Wellnessbag with bathrobes for adults, wellness towels and slippers in the room
- Balcony or terrace (approx. 6 m²)

Room also available for single use.

TWIN bed occupancy possible

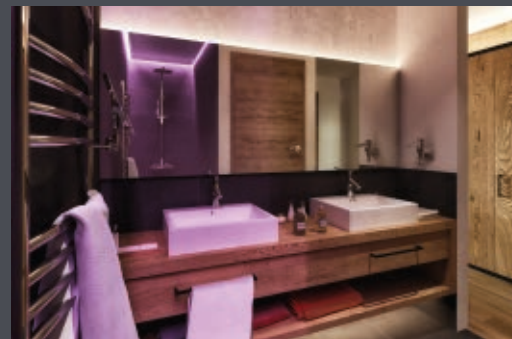
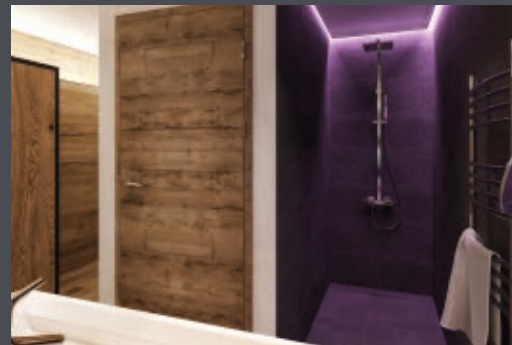
- For twin bed occupancy 2 Box-Spring beds (0.90 x 2.00 m)



Minimal: 1 Adult
Maximal: 2 Adults

STYLISH
 Double room (approx. 30 m²)

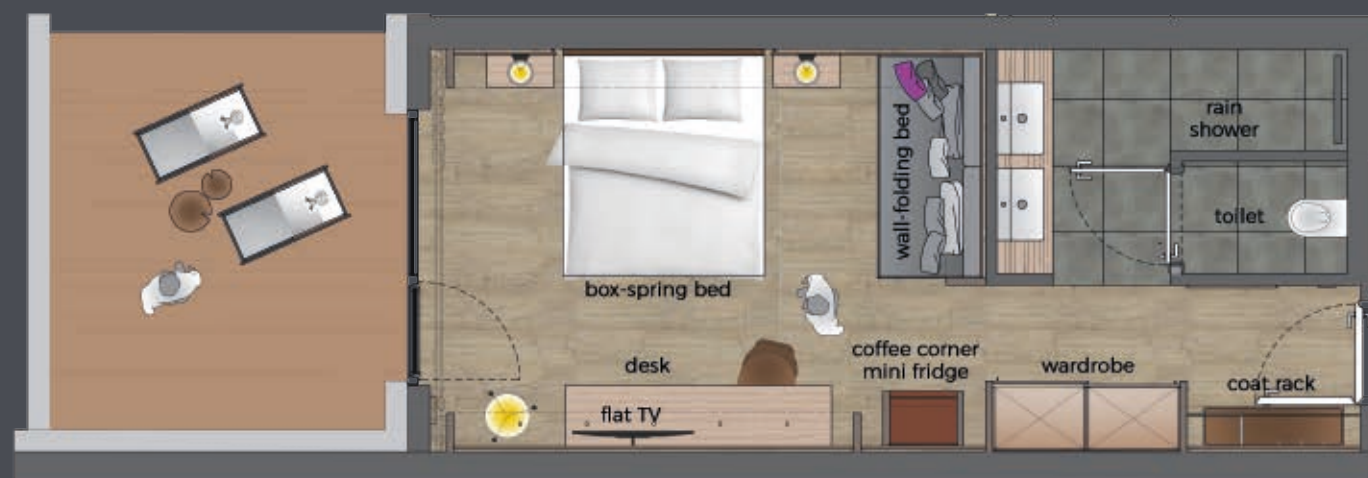
- Kingsize Box-Spring bed (2.00 x 2.00 m)
- Sofa
- Large flat screen TV
- USB charging socket
- Telephone
- Roomsafe
- Mini fridge
- WLAN
- Nespresso coffee machine & original capsules
- Kettle and tea bar
- Bathroom with double washbasin
- Separate toilet
- Rain shower
- Make-up mirror and hairdryer
- Body care products in the bathroom
- Wellnessbag with bathrobes for adults, wellness towels and slippers in the room
- Balcony or terrace (approx. 6 m²)



Minimal: 2 Adults
 Maximal: 2 Adults

4 YOU
Double room (approx. 30 m²)

- Box-Spring bed (1.80 x 2.00 m)
- Wall-folding bed with couch function (Sleeping option for 3rd and 4th person)
- Large flat screen TV
- USB charging socket
- Telephone
- Roomsafe
- Mini fridge
- WLAN
- Nespresso coffee machine & original capsules
- Kettle and tea bar
- Bathroom with double washbasin
- Separate toilet
- Rain shower
- Make-up mirror and hairdryer
- Body care products in the bathroom
- Wellnessbag with bathrobes for adults, wellness towels and slippers in the room
- Balcony or terrace (approx. 6 m²)



Minimal: 2 Adults
Maximal: 3 Adults + 1 Child

HAPPY

Family room (approx. 42 m²)

Small anteroom, 2 bedrooms and a bathroom

1. Bedroom equipped with:

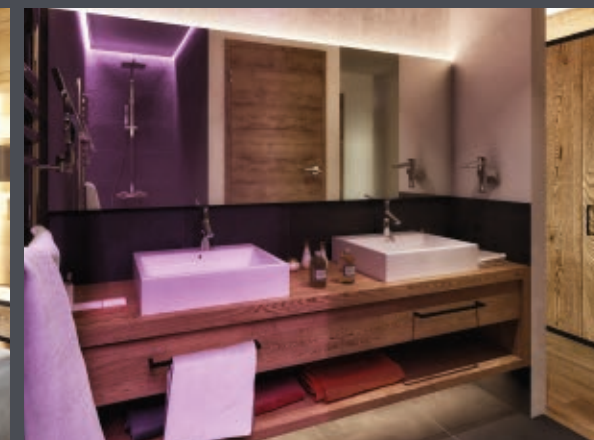
- Box-Spring bed (1.80 x 2.00 m)
- Sofa / Wall-folding bed (sleeping option for 3rd and 4th person)
- Large flat screen TV
- USB charging socket
- Telephone
- Roomsafe
- Mini fridge
- WLAN
- Nespresso coffee machine & original capsules
- Kettle and tea bar
- Balcony (approx. 6 m²)

2. Bedroom equipped with:

- Box-Spring bed (1.80 x 2.00 m)
- Large flat screen TV
- USB charging socket
- Roomsafe
- Mini fridge
- WLAN

Bathroom:

- Bathroom with double washbasin
- Separate toilet
- Rain shower
- Make-up mirror and hairdryer
- Body care products in the bathroom
- Wellnessbag with bathrobes for adults, wellness towels and slippers in the room



Minimal: 2 Adults + 2 Children
Maximal: 4 Adults + 1 Child



Family room (approx. 46 m²)

Small anteroom, 2 bedrooms and 2 bathrooms

- Wellnessbag with bathrobes for adults, wellness towels and slippers in the room
- WLAN

1. Bedroom equipped with:

- Box-Spring bed (1.80 x 2.00 m)
- Large flat screen TV
- USB charging socket
- Telephone
- Roomsafe
- Mini fridge
- Nespresso coffee machine & original capsules
- Kettle and tea bar
- Bathroom with one washbasin and toilet
- Rain shower
- Make-up mirror and hairdryer
- Body care products in the bathroom
- Balcony (approx. 6 m²)

2. Bedroom equipped with:

- Box-Spring bed (1.80 x 2.00 m)
- Large flat screen TV
- USB charging socket
- Telephone
- Roomsafe
- Mini fridge
- Bathroom with one Washbasin and toilet
- Rain shower
- Make-up mirror and hairdryer
- Body care products in the bathroom
- Balcony (approx. 6 m²)



Minimal: 2 Adults + 2 Children
Maximal: 4 Adults



GENERATION

Family room (approx. 70 m²)

Small anteroom, 2 bedrooms and 2 bathrooms

- Wellnessbag with bathrobes for adults, wellness towels and slippers in the room
- WLAN

1. Bedroom equipped with:

- Box-Spring bed (1.80 x 2.00 m)
- Relax chair with footstool
- Large flat screen TV
- USB charging socket
- Telephone
- Roomsafe
- Mini fridge
- Nespresso Coffee machine & original capsules
- Kettle and tea bar
- Bathroom with one Washbasin and sep. WC
- Rain shower
- Make-up mirror and hair dryer
- Body care products in the bathroom
- Balcony (approx. 6 m²)

2. Bedroom equipped with:

- Box-Spring bed (1.80 x 2.00 m)
- Stylish Sofa
- Wall-Folding bed
(Sleeping option for 5th and 6th person)
- Large flat screen TV
- USB charging socket
- Telephone
- Roomsafe
- Mini fridge
- Nespresso Coffee machine & original capsules
- Kettle and tea bar
- Bathroom with double washbasin & sep. WC
- Rain shower
- Make-up mirror and hairdryer
- Body care products in the bathroom
- Balcony (approx. 6 m²)



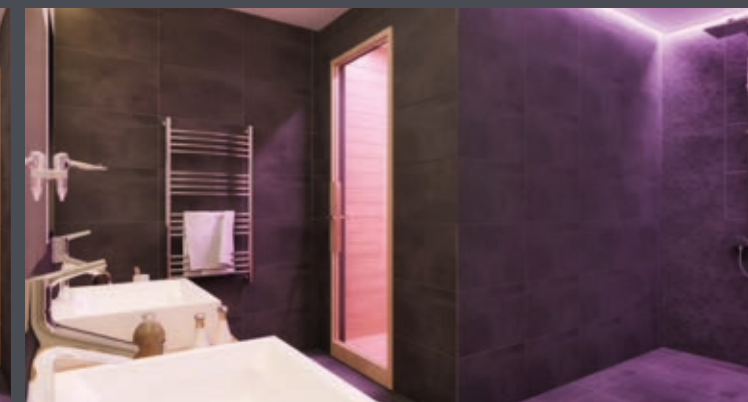
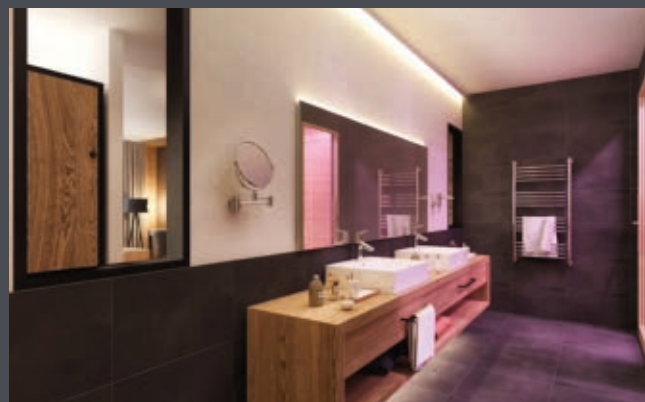
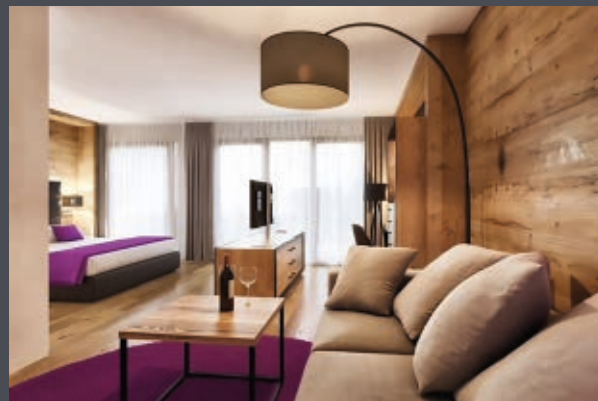
Minimal: 4 Adults / 2 Adults + 3 Children
Maximal: 4 Adults + 1 Child



LIFESTYLE

Juniorsuite (approx. 52 m²)

- Kingsize Box-Spring bed (2.00 x 2.00 m)
- Sofa corner / sofa bed
- Large flat screen TV
- USB charging socket
- Telephone
- Roomsafe
- Mini fridge
- WLAN
- Nespresso coffee machine & original capsules
- Kettle and tea bar
- Bathroom with double washbasin
- Separate toilet
- Infrared cabin
- Rain shower
- Make-up mirror and hairdryer
- Body care products in the bathroom
- Wellnessbag with bathrobes for adults, wellness towels and slippers in the room
- Balcony (approx. 6 m²)



Minimal: 2 Adults

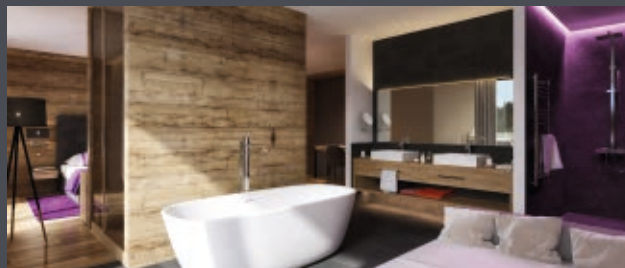
Maximal: 3 Adults / 2 Adults + 2 Children



PASSION

Wellness Suite (approx. 46 m²)

- Kingsize Box-Spring bed (2.00 x 2.00 m)
- Relax lounge daybed
- Large flat screen TV
- USB charging socket
- Telephone
- Roomsafe
- Mini fridge
- WLAN
- Nespresso coffee machine & original capsules
- Kettle and tea bar
- Open Bathroom with double washbasin
- Separate toilet
- Infrared cabin
- Stand-alone whirlpool tub
- Rain shower
- Make-up mirror and hairdryer
- Body care products in the bathroom
- Wellnessbag with bathrobes for adults, wellness towels and slippers in the room
- Balcony (approx. 10 m²)



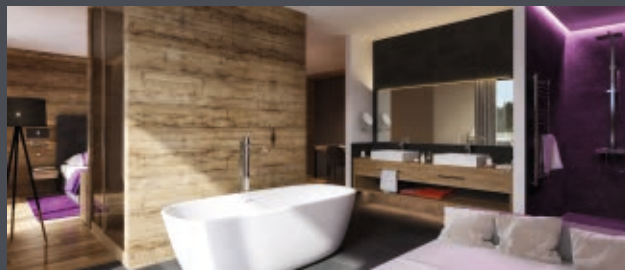
Minimal: 2 Adults
Maximal: 2 Adults



HEARTBEAT

Wellness Suite Deluxe (approx. 46 m²)

- Kingsize Box-Spring bed (2.00 x 2.00 m)
- Relax lounge daybed
- Large flat screen TV
- USB charging socket
- Telephone
- Roomsafe
- Mini fridge
- WLAN
- Nespresso Coffee machine & original capsules
- Kettle and tea bar
- Open Bathroom with double washbasin
- Separate toilet
- Infrared cabin
- Stand-alone bathtub with lighting effect
- Rain shower
- Make-up mirror and hairdryer
- Body care products in the bathroom
- Wellnessbag with bathrobes for adults, wellness towels and slippers in the room
- Balcony (approx. 8 m²)
- Terrace (approx. 10 m²)
- Outdoor whirlpool



Minimal: 2 Adults
Maximal: 2 Adults

WOW
Suite (approx. 60 m²)

Small anteroom, 1 separate bedroom, 1 separate living- / bedroom, 1 additional separate toilet

Bedroom equipped with:

- Kingsize Box-Spring bed (2.00 x 2.00 m)
- Large flat screen TV
- USB charging socket
- Telephone
- Roomsafe
- Mini fridge
- WLAN
- Nespresso coffee machine & original capsules
- Kettle and tea bar
- Balcony (approx. 6 m²)

Separate living / bedroom equipped with:

- Sofa corner / sofa bed
- Large flat screen TV
- Open fireplace
- Terrace (approx. 10 m²)
- Outdoor whirlpool

Large bathroom with double washbasin:

- Separate toilet
- Large sauna
- Rain shower
- Make-up mirror and hairdryer
- Body care products in the bathroom
- Wellnessbag with bathrobes for adults, wellness towels and slippers in the room



Minimal: 2 Adults
Maximal: 3 Adults / 2 Adults + 2 Children

Living Room by day,
stylish bar and eventlocation by night.

Enjoy the local cuisine and
stylish lounge-music or join our
regular music-events at the PURA ALM.

Take a seat at the gallery upstairs.
Relax on the couch around the fireplace
in the ADAPURA Living Room.
Just have a good time.

#adapuraevents
#relax #haveagoodtime #bepartofit
#goodpeople #goodfood #goodmusic

- ✓ Traditional austrian restaurant
- ✓ Bar
- ✓ Lounge „The Living Room“
- ✓ Weekly music-events (December - March)
- ✓ Further events, e.g. birthday- & christmas partys, weddings or seminars
- ✓ and much more

PURA *Alm*

RESTAURANT • LOUNGE • BAR • EVENTS

#EVENTS

*Music. Drinks.
Friends.*



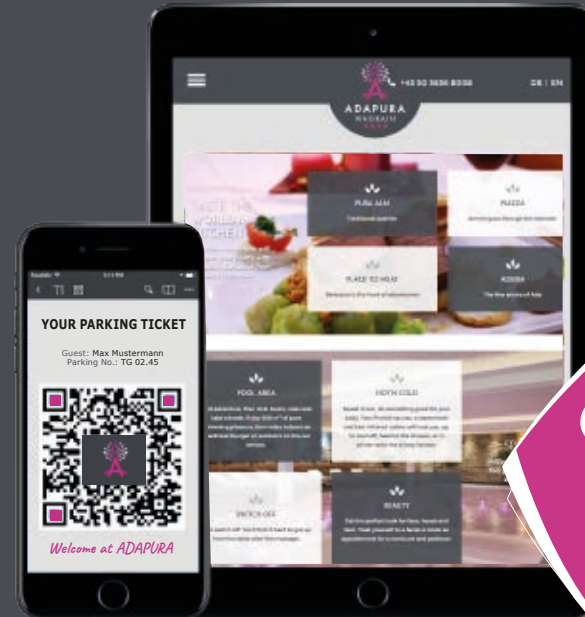
ADAPURA APP

Digitalisation

All information
always available!

The unique ADAPURAAPP
offers our guests
a range of applications:

- ✓ Check-in & check-out
- ✓ Digital room-key
- ✓ Digital parking-ticket
- ✓ Menu card & drink menu
- ✓ Table booking
- ✓ Room service order
- ✓ Booking of wellness-treatments
- ✓ Morning-post
- ✓ Social media
- ✓ Special offers
- ✓ Information about the surrounding area
- ✓ and much more



Information
always at hand

COMING
SOON





WINTER Rates 2019/20

08.12. - 21.12.19 04.01. - 18.01.20 18.01. - 01.02.20
07.03. - 12.04.20 29.02. - 07.03.20 01.02. - 29.02.20 21.12.19 - 04.01.20

Room name	Type	Size	Minimum	Maximum	Season A	Season B	Season C	Season D	Season E
CASUAL	Double room*	approx. 25 m ²	2 Adults	2 Adults	€ 115,-	€ 135,-	€ 145,-	€ 155,-	€ 165,-
STYLISH	Double room	approx. 30 m ²	2 Adults	2 Adults	€ 125,-	€ 145,-	€ 155,-	€ 165,-	€ 175,-
4 YOU	Double room	approx. 30 m ²	2 Adults	3 Adults + 1 Child	€ 125,-	€ 145,-	€ 155,-	€ 165,-	€ 175,-
HAPPY	Family room	approx. 42 m ²	2 Ad. + 2 Children	4 Adults + 1 Child	€ 145,-	€ 165,-	€ 175,-	€ 185,-	€ 195,-
STAR	Family room	approx. 46 m ²	2 Ad. + 2 Children	4 Adults	€ 165,-	€ 185,-	€ 195,-	€ 205,-	€ 215,-
GENERATION	Family room	approx. 70 m ²	4 Ad. / 2 Ad. + 3 Ch.	4 Ad. + 1 Child	€ 185,-	€ 205,-	€ 215,-	€ 225,-	€ 235,-
LIFESTYLE	Junior Suite	approx. 52 m ²	2 Adults	3 Ad. / 2 Ad. + 2 Ch.	€ 165,-	€ 185,-	€ 195,-	€ 205,-	€ 215,-
PASSION	Wellness Suite	approx. 46 m ²	2 Adults	2 Adults	€ 165,-	€ 185,-	€ 195,-	€ 205,-	€ 215,-
HEARTBEAT	Wellness Suite Deluxe	approx. 46 m ²	2 Adults	2 Adults	€ 185,-	€ 205,-	€ 215,-	€ 225,-	€ 235,-
WOW	Suite	approx. 60 m ²	2 Adults	3 Ad. / 2 Ad. + 2 Ch.	€ 205,-	€ 225,-	€ 235,-	€ 245,-	€ 255,-

*Extra charge: double room „Casual“ for single use.

The listed prices are per person and night in Euro for the respective room type with all listed inclusive services (see next page). Prices are plus an additional € 2,- tourist tax per adult (15 years and above). The indicated prices are starting prices and may differ from the table due to special events and according to demand.

Obligatory New Year's Eve additional charge of € 65,- per adult (from 15 years). Arrival and departure days: daily for a minimum stay of 3 nights. **Exception:** for arrival on December 21st or 22nd 2019 there will be a minimum stay of 4 nights. For an arrival on December 26th / 27th / 28th, 2019 a minimum stay of 7 nights will apply. From February 01st to 29th, 2020 there will be a minimum stay of 7 nights, with arrival and departure alternatively on Saturday or Sunday.

Short stay surcharge: 10 % surcharge per adult per night (until 3 nights).

Additional Information:

Check-in from 2 p.m. ■ Check-out until 10 a.m. ■ Reception: occupied 24 hours a day ■ Infant beds free of charge ■ Pets are not allowed ■ per room, one free underground parking space is available ■ Accepted credit cards: Visa, MasterCard, Maestro ■ Number of lifts: 2 ■ Wheelchair accessible: no ■ Safe: available in the room, free of charge ■ The underground parking space is included from 2 p.m. on your arrival day until 10 a.m. on your departure day

Discounts

(valid for all types of rooms available)

0 - 2,9 years **	90 %
3 - 5,9 years **	70 %
6 - 14,9 years **	50 %
from the 3rd person from 15 years	25 %

** Please find the type of accommodation from the 3rd person at the individual room descriptions.



WINTER Included Services

„Fresh & Delicious“

- From 7 a.m. to 10 a.m.: rich cold/hot breakfast buffet with regional products as well as fruit juices, prosecco, coffee specialities and a large selection of teas; in one of our restaurants we will offer an exclusive “Adults Only” breakfast area (admission age 15)
- From 10 a.m. to 11 a.m.: Continental late riser’s breakfast
- From 3 p.m. to 5 p.m.: cold / hot skier’s snack
- From 6 a.m. to 9 a.m.: Dinner, free to choice in one of our 4 themed restaurants

„Chill & Relax“

- Wellness bag with bathrobes for adults, wellness towels and slippers in the room
- Indoor swimming pool heated to approx. 30°C, surrounding relaxation daybeds, and a family textile sauna in the outdoor area

- Sauna world (admission from 15 years) with old wood sauna heated to approx. 90°C, a steam bath as well as an infrared cabin and three relaxation rooms with adjoining outside terrace

„Extra Miles“

- One guaranteed free underground parking space per room (*included from 2 p.m. on your arrival day until 10 a.m. on your departure day*)
- E-Mobility: with a total of three charging stations, owners of electric vehicles are well provided for. Initial charging will be complimentary. Further recharges are billed according to consumption
- ADAPURA „goes digital“ free APP with many features
- Free WLAN access in the entire hotel with 100 Mbit access
- Daily newspapers in the lobby
- TV Lounge in our hotel bar
- „The Living Room“ with Sport broadcasts
- Ski tickets available at the reception desk
- State-of-the-art sports shop, with top ski rental and skiing school right in the hotel

„New Years Eve“

- ADAPURA New Years Eve Buffet
- Live band
- 1 bottle Prosecco per room
- Fireworks
- Midnight buffet
- „Hangover breakfast“

„Winter WOW 100“

- 100** % guaranteed and free underground parking (for 1 car per room)
- 100** steps to the Grafenberg cable car with direct access to Snow Space or Ski Amadé
- 100** % free entry to Wagrain Wasserwelt (3 hours indoor swimming pool daily, not including sauna)
- 100** meters to the centre of Wagrain
- 100** % Nespresso coffee enjoyment in the room
- 100** % sports shop, skiing school and ski rental in the hotel
- 100** % downhill ski trail leads directly past the hotel
- 100** % WLAN access throughout the hotel



SUMMER Rates 2020

12.04. - 30.05.20 30.05. - 27.06.20 27.06. - 11.07.20
03.10. - 01.11.20 05.09. - 03.10.20 22.08. - 05.09.20 11.07. - 22.08.20

Room name	Type	Size	Minimum	Maximum	Season A	Season B	Season C	Season D
CASUAL	Double room*	approx. 25 m ²	2 Adults	2 Adults	€ 99,-	€ 109,-	€ 119,-	€ 129,-
STYLISH	Double room	approx. 30 m ²	2 Adults	2 Adults	€ 109,-	€ 119,-	€ 129,-	€ 139,-
4 YOU	Double room	approx. 30 m ²	2 Adults	3 Adults + 1 Child	€ 109,-	€ 119,-	€ 129,-	€ 139,-
HAPPY	Family room	approx. 42 m ²	2 Adults + 2 Children	4 Adults + 1 Child	€ 129,-	€ 139,-	€ 149,-	€ 159,-
STAR	Family room	approx. 46 m ²	2 Adults + 2 Children	4 Adults	€ 149,-	€ 159,-	€ 169,-	€ 179,-
GENERATION	Family room	approx. 70 m ²	4 Adults / 2 Ad. + 3 Children	4 Adults + 1 Child	€ 169,-	€ 179,-	€ 189,-	€ 199,-
LIFESTYLE	Junior Suite	approx. 52 m ²	2 Adults	3 Adults / 2 Ad. + 2 Ch.	€ 149,-	€ 159,-	€ 169,-	€ 179,-
PASSION	Wellness Suite	approx. 46 m ²	2 Adults	2 Adults	€ 149,-	€ 159,-	€ 169,-	€ 179,-
HEARTBEAT	Wellness Suite Deluxe	approx. 46 m ²	2 Adults	2 Adults	€ 169,-	€ 179,-	€ 189,-	€ 199,-
WOW	Suite	approx. 60 m ²	2 Adults	3 Ad. / 2 Ad. + 2 Children	€ 189,-	€ 199,-	€ 209,-	€ 219,-

*Extra charge: double room „Casual“ for single use.

The prices quoted are per person and night in Euro for the type of room advertised with all the services included (see next page). Prices are plus an additional € 2,- tourist tax per adult (15 years and above). The indicated prices are starting prices and may differ from the table due to special events and according to demand. Daily arrival & departure with a minimum stay of 2 nights. Extra charge: doubleroom „Casual“ for single use.

Short stay surcharge: 10 % surcharge per adult per night (until 2 nights).

Additional Information:

Check-in from 2 p.m. ■ Check-out until 10 a.m. ■ Reception: occupied 24 hours a day ■ Infant beds free of charge ■ Pets are not allowed ■ per room, one free underground parking space is available ■ Accepted credit cards: Visa, MasterCard, Maestro ■ Number of lifts: 2 ■ Wheelchair accessible: no ■ Safe: available in the room, free of charge ■ The underground parking space is included from 2 p.m. on your arrival day until 10 a.m. on your departure day

Discounts / Rates per child and per night	Season A	Season B	Season C	Season D
0 - 2,9 years **	100 %	100 %	100 %	100 %
0 - 5,9 years ** <i>Valid for room types 4 YOU and LIFESTYLE</i>	100 %	100 %	100 %	100 %
0 - 5,9 years ** <i>Valid for room types HAPPY, STAR, GENERATION and WOW</i>	€ 30,-	€ 33,-	€ 36,-	€ 39,-
6 - 14,9 years ** <i>Valid for room types 4 YOU and LIFESTYLE</i>	€ 30,-	€ 33,-	€ 36,-	€ 39,-
6 - 14,9 years ** <i>Valid for room types HAPPY, STAR, GENERATION and WOW</i>	€ 60,-	€ 63,-	€ 66,-	€ 69,-
from the 3rd person from 15 years **	25 %	25 %	25 %	25 %

** Please find the type of accommodation from the 3rd person at the individual room descriptions.



SUMMER

Adapura Premium All-Inclusive

„Fresh & Delicious“

- From 7 a.m. to 10 a.m.: rich cold / hot breakfast buffet with regional products as well as fruit juices, prosecco, coffee specialities and a large selection of teas. In one of our restaurants we will offer an exclusive “Adults Only” breakfast area (admission age 15).
- From 10 a.m. to 11 a.m. continental late riser’s breakfast
- From 12 a.m. to 2 p.m. light lunch buffet
- From 3 p.m. to 4.30 p.m. cake & snack buffet
- From 6 p.m. to 9 p.m. dinner, free to choice in one of our 4 themed restaurants
- From 7 a.m. to 12 p.m. a rich selection of non-alcoholic & alcoholic brand beverages as part of our “ADAPURA Premium All Inclusive” beverage menu such as original Cola, Fanta, Sprite, various fruit juices, draught beers and wheat beer, Austrian and international quality wines, prosecco, brand spirits, various schnapps, cocktails as well as coffee and tea specialities

„Chill & Relax“

- Wellness bag with bathrobes for adults, wellness towels and slippers in the room
- Indoor swimming pool heated to approx. 30°C, surrounding relaxation daybeds, and a family textile sauna in the outdoor area
- Sauna world (admission from 15 years) with old wood sauna heated to approx. 90°C, a steam bath as well as an infrared cabin and three relaxation rooms with adjoining outside terrace
- Heatable outdoor pool with adjoining garden terrace

„Extra Miles“

- One guaranteed free underground parking space per room (*included from 2 p.m. on your arrival day until 10 a.m. on your departure day*)
- E-Mobility: with a total of three charging stations, owners of electric vehicles are well provided for. Initial charging will be complimentary. Further recharges are billed according to consumption.
- ADAPURA „goes digital“ free APP with many features
- Free WLAN in the entire hotel with 100 Mbit access
- Daily newspapers in the lobby
- TV Lounge in our hotel bar „The Living Room“ with Sport broadcasts

- State-of-the-art sports shop right in the hotel
- Free rental of infant beds, high chairs, bottle warmers and baby monitors

„Summer WOW 100“

- 100** % guaranteed and free underground parking (for 1 car per room)
- 100** steps to the Grafenberg cable car with direct access to Snow Space or Ski Amadé
- 100** % free entry to Wagrain Wasserwelt (day ticket for the indoor and outdoor swimming pool, limited to 3 hours in bad weather)
- 100** meters to the centre of Wagrain
- 100** % Nespresso coffee enjoyment in the room
- 100** % brand beverages as part of our ADAPURA Premium All Inclusive beverage menu
- 100** % sports and fashion shop right at the hotel
- 100** % heatable outdoor pool
- 100** % WLAN access throughout the hotel



#WELCOME

*We are looking forward
to delighting you
beyond your expectations.*



www.adapura-wagrain.com